



SA CHEN STEEL MOLD CO., LTD.



ISO 13485



ISO 9001

Office Appliance Molds
Bicycle Transmission Grip Mold
Home Appliances Molds
Computer Accessories Molds
Communication Accessories And Mobile Phone Molds
IC Holding Tray Molds
Card Molds and Molded Parts (Top And Bottom Covers)
Thin Battery Casing (Thin Shell) Mold and Molded Parts.
Mold Size Production Capability up to 40 Tons

SA CHEN

*Design & Manufacture of
Precision Plastic Injection Mold
Injection molding production*

Company Profile

Company name : Sa Chen Steel Mold Co., Ltd.
Proprietor : Scotty Lin
Founding Date : March 15th, 1987
Initial Capital : N.T. \$60 million
Factory Building Space :3300m²

会社名：協誠鋼模株式会社
取締役：林志苗
創立日：1987年3月15日
資本金：NT：60,000,000
工場面積：1000坪



Sa Chen has started from 1987 by Scotty Lin and Scomin Lin, since then we have been actively to make an attempt to develop all kinds of precision molds. We, as a team, have been working very hard in the past and now we have been recognized by many famous brand customers as the “best-of-the-best” mold making and designing supplier. We appreciate our customers giving us all the supports and recognitions to help us continuously to grow stronger in terms of skill level and business. In double density mold and double density injection, we have been praised by our customers. Moreover, we are the LEADER in making thin shell products in Taiwan.



USB FLASH

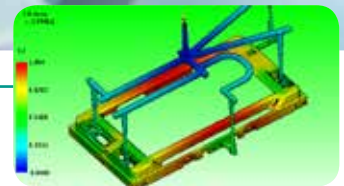
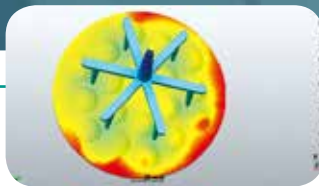
協誠鋼模

株式会社は林志苗と林志銘兄弟により、1987年に創立されました。創業以来、積極的に各種の精密プラスチック金型の開発・製造に携わっております。協誠は二十年近くにわたり全社努力を積み重ねた結果、数々の世界の大手メーカーから支持され、技術は業績とともに成長しつつあります。特に、二色射出成形用金型の分野では高い評価をいただいているほか、薄品射出成形用金型の開発・設計においても、台湾の業界を常にリードしております。

1987	Mar	創立(台湾・台中県大雅郷で)	1987	Mar.	The establishment of SA CHEN STEEL MOLD Co. LTD., in Daya Dist., Taichung City, Taiwan.
1993	Jan	デザイン部門設立、資料コンピューター化	1993	Jan.	Established design department(CAD/CAM).
1995	Jun	台湾台中神岡工場(第一工場)設立	1995	Jun.	Moved and Established new factory in Shengkang Dist., Taichung City, Taiwan.
1996	Jun	CNC工作機械部門設立	1996	Jun.	Established CNC department.
1998	Sep	[開発特許取得] 金型冷却用部品 - スパイラル冷却仕切板の開発に成功(台、日、独、米、中諸国の特許取得)	1998	Sep.	[Patent invention in 5 countries] SPIRAL BAFFLE BOARDS cooling system developed. Patent invention in 5 countries.
2000	Mar	磨き室設立	2000	Mar.	Established polishing department.
2000	May	射出成形部門設立	2000	May.	Established injection department.
2000	Jul	ISO 9002審査登録取得	2000	Jul.	ISO 9002 Certificated.
2001	Feb	二色射出用金型の開発に成功；二色射出成形機導入	2001	Feb.	Success in developed double injection (2K) mold and invest in double injection machine.
2001	Dec	中国廈門の設計事務所設立	2001	Dec.	Established design assistance office in Xiamen, China.
2002	Mar	CNCワイヤカット部門設立；メモリカード(薄肉)金型の技術開発に成功	2002	Mar.	Established Wire-cut EDM department and success in developed shin shell product molds such as memory card.
2003	Jul	ISO 9001審査登録取得	2003	Jul.	ISO 9001 Certificated.
2004	Dec	台湾第二工場設立	2004	Dec.	Expansion of the Taiwan factory - Building#2
2007	Mar	タイ工場Smart Mold Co., Ltd. 設立	2007	Mar.	The establishment of SMART MOLD Co. Ltd., in Thailand.
2007	Oct	発光ダイオード射出導入	2007	Oct.	Injection technology of LED products developed and conducted.
2009	Oct	ISO 9001：2008 審査登録取得	2009	Dec.	ISO 9001：2008 Certificated
2010	Feb	中国昆山金型メンテナンスセンター設立	2010	Feb.	The establishment of maintenance unit in Kunshan, China.
2010	Oct	[開発特許取得] 金型内ゲートカット	2010	Oct.	[Patent invention in Taiwan] Mold inner gate self-cutting technology developed.
2010	Dec	台湾第三工場設立	2010	Dec.	Expansion of the Taiwan factory - Building#3
2011	Dec	台湾政府經濟部技術創新開発計画取得	2011	Dec.	Small Business Innovation Research(SBIR) program approved by Taiwan government to Invent Mold High-Efficiency Opening and Closing Technology Patent.
2012	Aug	台湾厚生労働省国民健康署健康認証取得	2012	Aug.	Healthy Workplace approval accredited by Taiwan government.
2013	Dec	クラス100,000医療クリーンルーム設立	2013	Dec.	Established Class 100,000 clean room for the Medical Industry.
2014	Jul	[開発特許取得] スナップコンタクト金型特許	2014	Jul.	[Patent Invention in Taiwan] Snap-Contact lens Mold developed.
2015	May	タイSmart Mold第二工場設立	2014	Nov.	D&B Top 1000 Elite SME Award.
2016	Jun	ドイツ・テュフ・ラインランドビジネス優良認定取得	2015	May.	Expansion of the Thai factory - Building#2
2017		台湾厚生労働省国民健康署健康認証維持	2016	Jun.	Obtain business information verification from TUV Germany.
2017		ISO 9001：2015 審査登録取得	2017		Accredited Approval as a Healthy Workplace in Taiwan.
2018		台湾台中市政府から台中市 - ゴールデンハンド優良中小企業賞受賞	2017		ISO 9001：2015 Certificate.
2019		ISO 13485：2016 審査登録取得	2018		Obtain Taiwan Taichung Government 2018 Golden Hand Award For Outstanding SMEs.
2020		台湾台中市政府技術創新開発計画(SBIR)取得	2019		ISO 13485：2016 Certificate.
2021		台湾厚生労働省中区 オン・ザ・ジョブ・トレーニング優良中小企業賞	2020		Taiwan Taichung City Government Small Business Innovation Research(SBIR).
			2021		Taiwan Taichung City Training Small and Medium Enterprises(SME) Outstanding Company.

Design

To Optimize and Work Efficiently By Using Advance CAD/CAM/CAE Applications.



■ Mold Flow Analysis

To improve quality and shorten delivery time during mold manufacturing, we continue to invest in high precision facilities such as: high speed and precision CNC, automated high precision wire EDM, double density injection machine, high pressure injection machine, optical QC equipments, and etc.

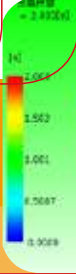
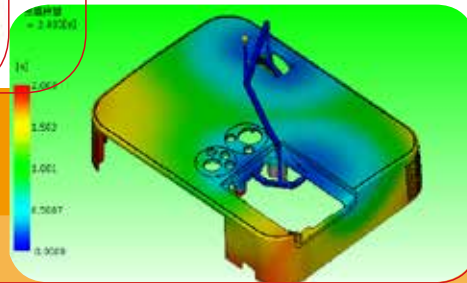
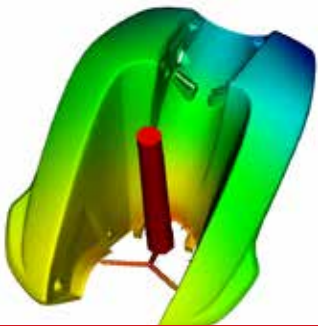
Nowadays, a precise mold requires a series of steps, which is development, designing, manufacturing, and trial test, to be able to satisfy Customers' expectation in terms of quality and delivery time. Both development and designing stages are critical factors to success. Because of the advancement of info-technology in the world, our designing team also keeps up with it and uses all kinds of software application, such as: PRO/E, SOLID WORKS, POWER MILL/SHAR, for development as an aid to acquire firsthand mold opening details and analysis reports. We continue to invest in developing software (CAD/CAM/CAE). Similarly with the aid from MOLD FLOW simulation application (CAE), we are able to determine or diagnose with before mold opening and come up with a better mold structure and processing method.

最新鋭設備と情報技術と熟練人材の技の融合
 先進的なCAD/CAM/CAEシステムで、金型デザインの最善を尽くす

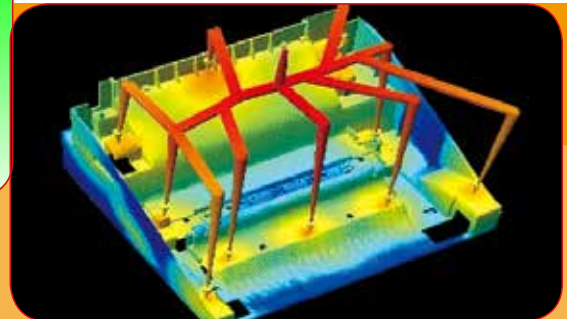
金型の品質 向上やリードタイムの短縮を図るため、精密な加工設備を採用しております。例えば、高速・高精度のMC/CNCフライス盤、ワイヤカット、二色射出機、超高速射出機、光学検査機器などを十分に活用しています。

近年、品質 や納期の短縮などに対するお客様の厳しいご要望にお応えするため、精密金型の製作は開発・設計、製造、テストなど、各工程の統合を図っています。特に金型の開発・設計はもっとも重要な工程で、設計部門における情報技術の適用を強化しております。各種のCAD/CAM/CAEソフトウェアを導入すると同時に、先進的なPRO/E、SOLID WORKS、POWER MILL/SHAR ソフトウェアも採用し、機構分析などに活用しています。

同時に、金型の開発 に当たって、最新ソフトウェアのMOLD FLOW (CAE) を利用して、金型のコンピューター・シミュレーション分析を行っております。それで、後日の射出成型における事前に問題を予測し、その問題を改善することによって、完璧と言える金型の開発・製造を可能にします。



Mold Flow Analysis

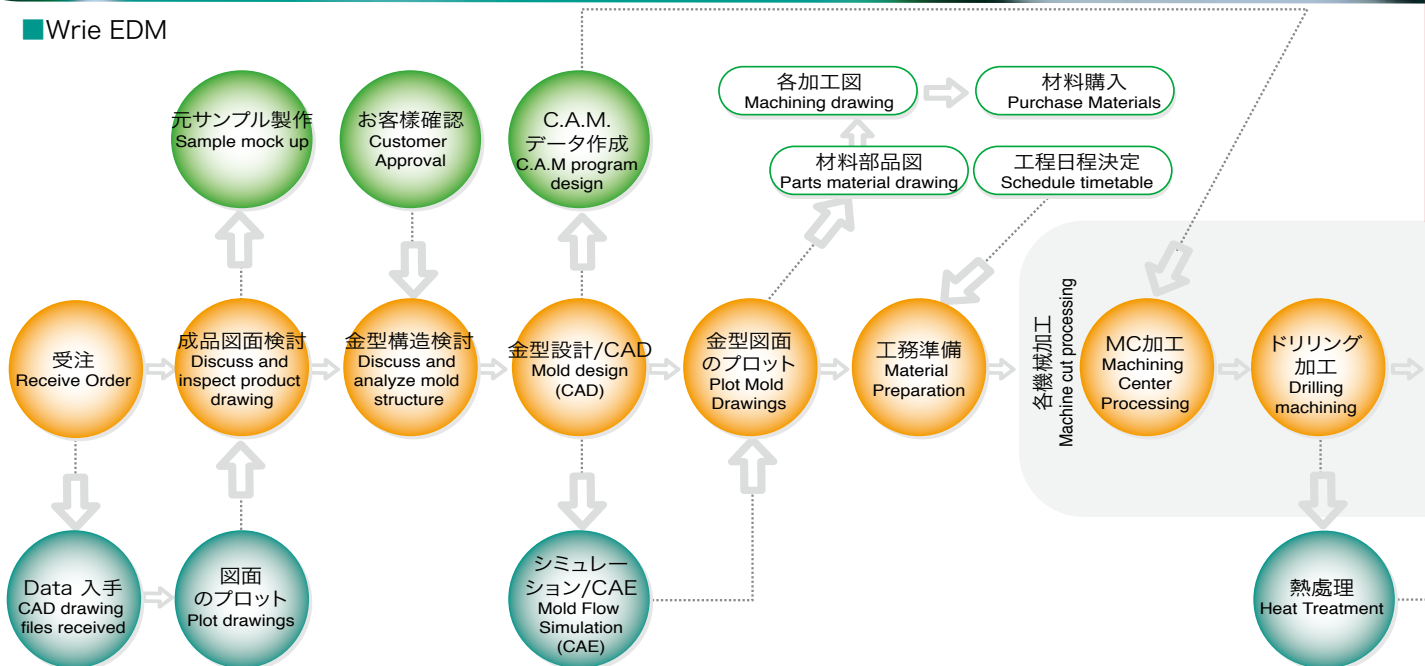


Facilities

A Combination of Precise Facilities, Info-Technology and Highly Trained Skill Personnel In Mold Making Process



■ Wrie EDM

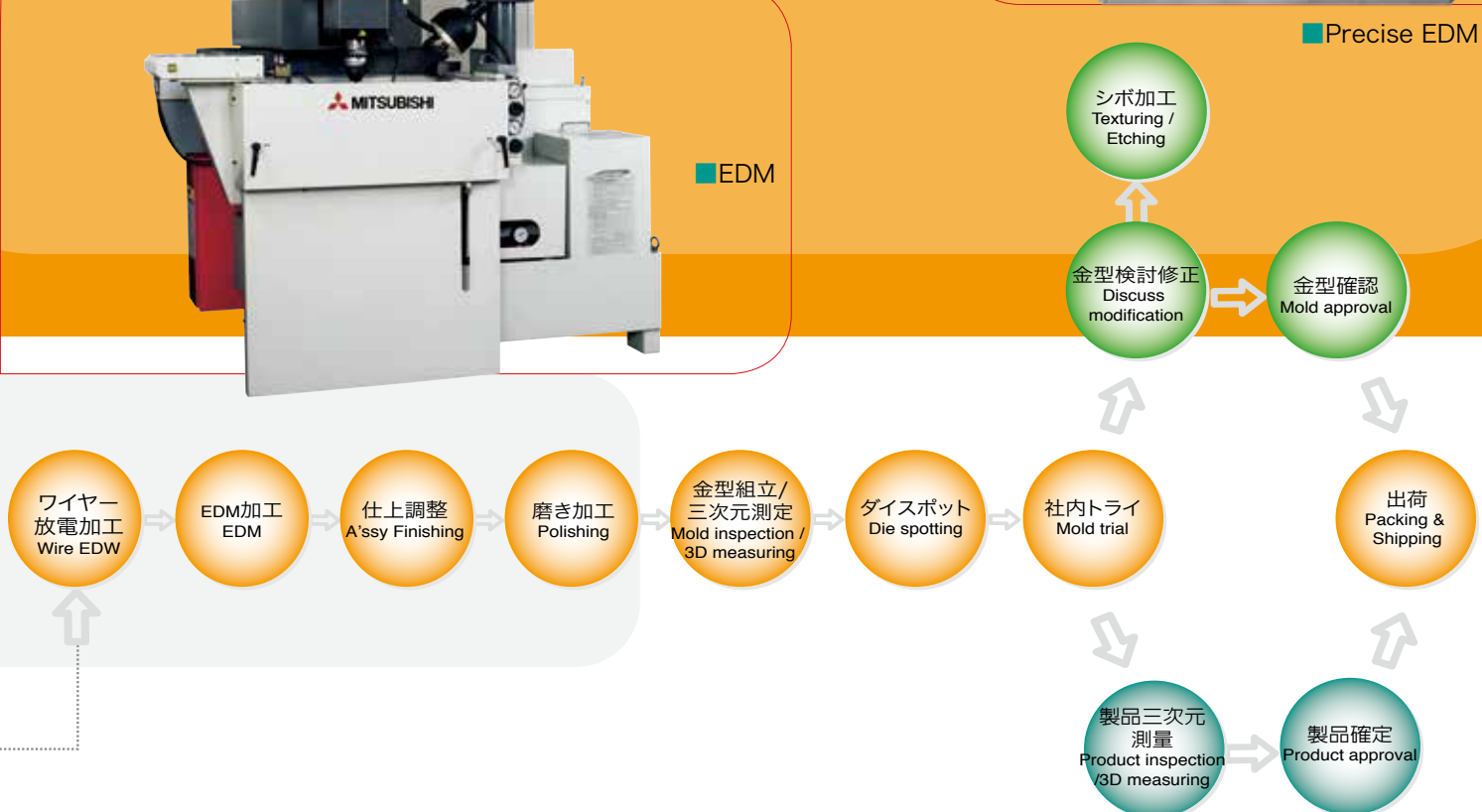


教育訓練、エポリューション

To Establish Employees Training Program

Sa Chen takes seriously on the issue of employees training program and gives proper authorities to the management group and assigns duty and as well as setting target for self-control and self-management. We integrate the master and apprentice program into our company system, which the senior employees will look after the junior employees. During the hands-on, the senior employees will point out the problems and discuss the possible solutions with the junior employees. We encourage employees to attend training programs to upgrade their professional knowledge and as well as self-cultivation; therefore, we can consistently make a break through and being innovative.

人材は当社の資産であり成長の根源であります。人員と組織のスリム化、及び社員の教育訓練を重視しております。各部門にそれぞれ、権限を持たせ、自発的に管理し、目標と責任を成し遂げます。師匠と弟子の理念のもと、先輩経験者の指導により実務を通し、問題を発見、答えを探し出します。当社は社員の成長に力を注いでおり、個人の専門知識高揚と躰の向上を重点推進しています。これらにより常に技術のレベルアップを進めて参ります。



Facilities

A Combination of Precise Facilities, Info-Technology and Highly Trained Skill Personnel In Mold Making Process



■ Machining Center

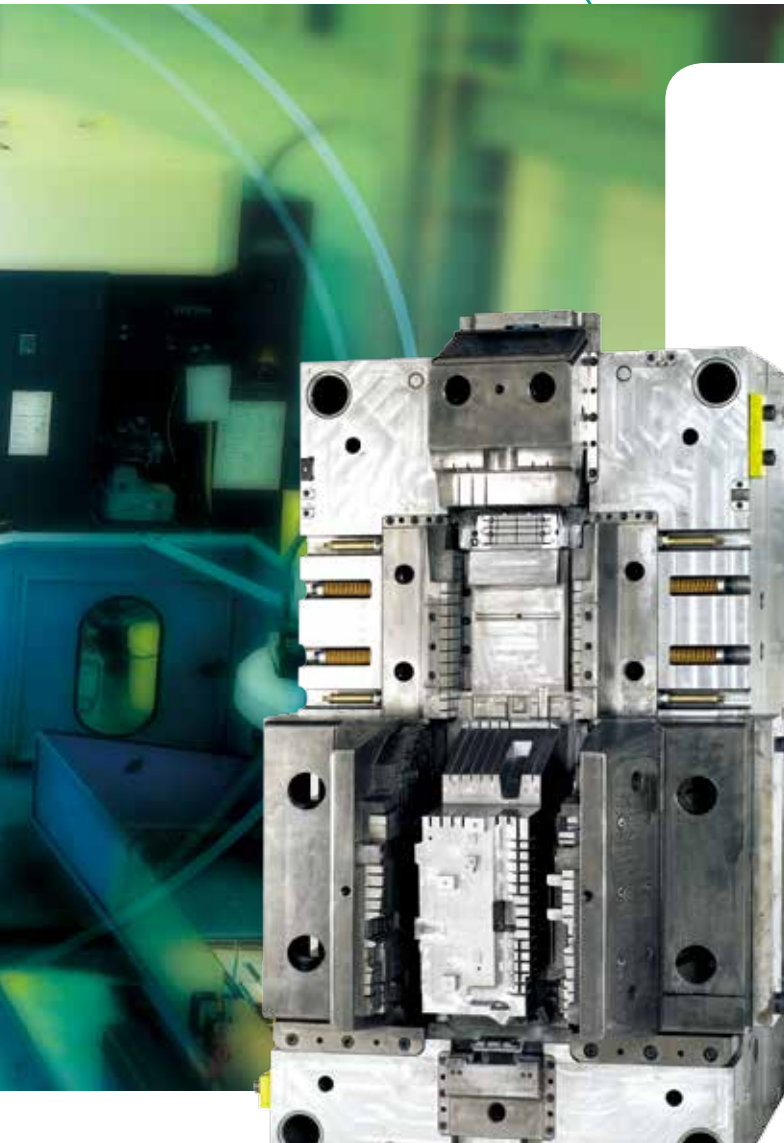


■ Mold Fitting

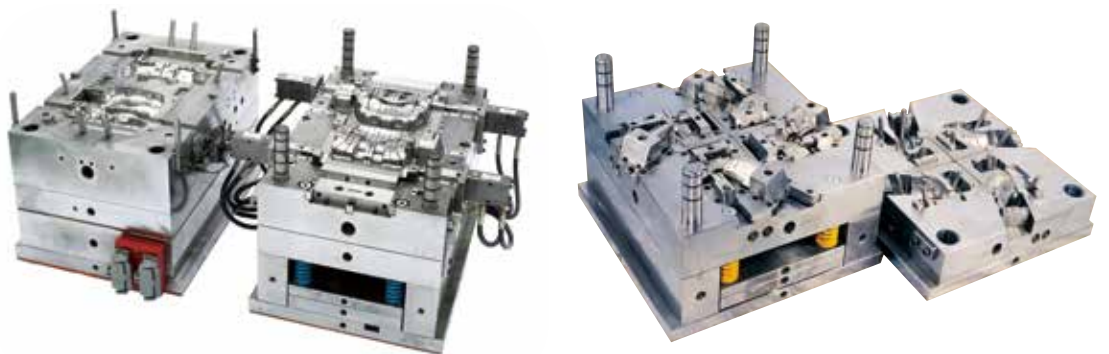
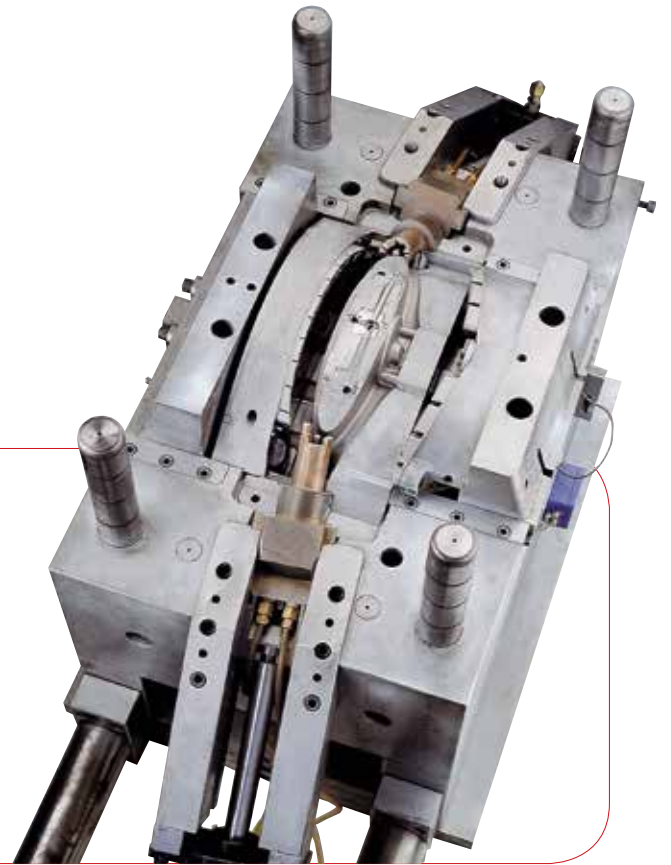




■ Clean room injection



■ Mold Fitting Machine



Facilities

A Combination of Precise Facilities, Info-Technology and Highly Trained Skill Personnel In Mold Making Process

- Insert molding/Overt molding mold

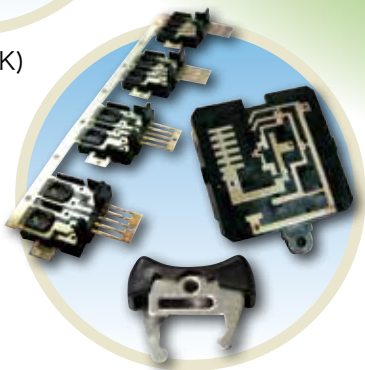
Plastic Injection Mold Design & Manufacture & Molding

Plastic injection Mold Design & Manufacture & Molding

- Office appliance plastic part mold
- Home appliance plastic part mold
- Bicycle plastic component part mold
- Mobile, radiophone and intercom mold
- Automotive plastic part mold
- IC Holding tray mold
- Memory card (Ultra thin) and USB flash driver mold
- Double density/Double injection/2 colors/ 2 compounds (2K) mold
- Weldless part mold
- Medical part mold
- Insert molding/Overt molding mold
- Optical/LED lens mold
- Mold Size Production Capability: 50kgs~10 Tons
- プラスチック金型の設計と製造
- OA機器類の金型
- 自転車用変速ギアと周辺部品の金型
- 家電製品及びPC周辺機器の金型
- 通信設備、携帯電話の金型
- 車関係の金型
- ウエルドレス成形金型
- 医療関連パーツの金型
- ICトレイ、メモリカードのカバーと金型
- 携帯電話用バッテリーのカバーと金型
- インサート成形金型と二色成形金型
- LED LENS金型
- 取り扱い可能金型の重量：50kgs~10tons



■ Double Injection (2K)



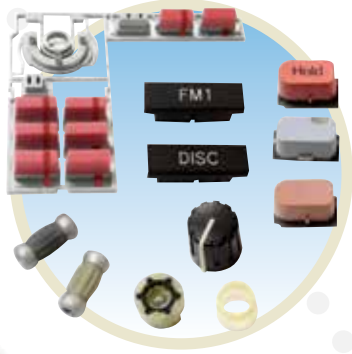
■ Insert molding Part
Over molding Part



■ Telephone Set



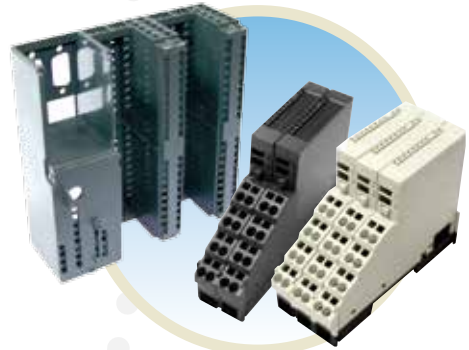
■ Intercom



■ Double Injection (2K)



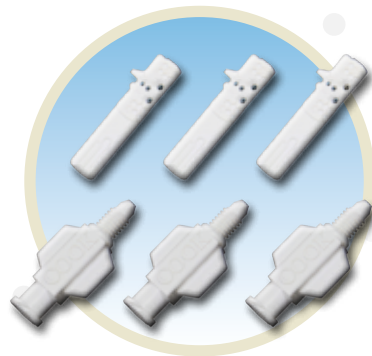
■ Double injection (2K)



■ I/O System



■ USB FLASH



■ Medical Parts



■ Projector

Quality Control

Establish and Educate the Entire Personnel with
the notion Quality Control



■ 2.5 D Image Measuring Machine

The very first day from our customer placing orders, our responsibility begins right away from mold design to machine processing to manufacturing quality control to assembly to trial test and molded parts. In this sequence of stages, we would examine them carefully and file the reports to our customers for confirmation, which is all done with our internal looping procedures. Sa Chen is actively educating its employees to be responsible with the quality of the entire products. We must admit that a person with strict quality standard will have a better quality result. For example, Our ejecting pins must be approved by our QC department in order for us to use it. Before we do any trial test on the molds, we are required to come up with precise mold measurement reports. We intend to show dedications and responsibilities to customers with our hard work put into every mold, thus we have won our customers recognition.



■ Projector



■ Hardness Testing

全員品質管理の理念

オーダーを頂くと当社の責任において、金型設計、加工、各工程検査、組み合せ、トライ、及びサンプルの寸法検査資料の提供など一貫システムで完成します。当社は積極的に全員品質管理の理念と能力を育成し、品質については、最後まで責任を持ちます。例え小さいエジェクトピンも品管員が確認を行い、ファーストライ前には金型寸法の検査を実施致します。お客様に対し、当社は責任義務を負い、喜んでいただけるように常に心掛けています。この取組姿勢はお客様から常に高い評価を頂いております。

■ 3D Measuring



Operational Management

- Home & Office appliance plastic part mold
- Automotive plastic part mold
- Medical parts
- Double density/ Double injection/ 2 colors/ 2 components
- Insert molding/ Ovent molding mold
- Heat & cold
- Ultra thin & micro plastic part mold
- Plastic



■ Car Stereo



■ Double Injection (2K)



■ Motorbike

We always carry out an undertaking from start to finish. Our belief is that “QUALITY” is our first priority, and also we understand that innovation and creativity is essential to us. As well as to respect our customers and stand on customers’ point of view, so “The Customer is always RIGHT” becomes one of our policies. The moment from Sa Chen’s establishment, growth and expansion, we as a whole have the same goal to strive toward.

Sa Chen being a professional plastic injection mold maker, we have a slogan which is “To be Professional, Innovative, and Supportive”. We work hard to pursue excellency, continuous growth, more than that we will attempt to use management skills to ensure that we meet with high standards and also be able to continue to improve, so that we can succeed in this industry.

会社方針

「首尾一貫」は協誠の不変の方針であり、また、「品質優先」「革新重視」「顧客第一」は一貫した経営理念であります。創業以来成長を続ける中で、協誠は「全社的なロイヤリティの統合、および一つの運命共同体として歩んでいく」の重要性を認識してきました。

協誠はプラスチック金型の専門製造業者として、製品の卓越性、会社の永続経営が保たれるように「専門、革新、奉仕」という経営理念を常に銘記しております。更に、効率的な品質管理技術をもって製品の改良を重ね、顧客の満足を得られるように、努力し、美しい未来を目指します。

・ IC Holding tray mold
 mold
 ounds/ 2k mold
 mold
 Injection
 ・ Insert molding
 ・ Office App



■ Automotive

■ Air Conditioner



■ Washing machine



■ Automotive



■ Automotive



PARENT COMPANY – TAIWAN

協誠鋼模股份有限公司

SA CHEN STEEL MOLD COMPANY LIMITED

台中市神岡區42951神林路70巷103號
103, LANE 70, SHEN LIN ROAD, SHEN KANG DIST.,
TAICHUNG CITY 42951, TAIWAN

E-mail : sales@taiwanmold.com

TEL : +886-4-25616200 / FAX : +886-4-25610990

URL : www.taiwanmold.com

SUBSIDIARY COMPANY – THAILAND

SMART MOLD COMPANY LIMITED

57 MOO 9, TAMOL KUBANGLUNG, AMPHUR LANDLUMKAEW,
PATHUMTHANI 12140 THAILAND

E-mail : sale@thaismartmold.com

TEL : +66-2979-5090 / FAX : +66-2979-5095

URL : www.thaismartmold.com